

OUR SPECIALTY
**WORK
BENCHES**
FOR ALL!

sjobergs.se

scandi plus 1425

SPECIFICATIONS	inches	mm
SCANDI PLUS 1425	Nr 33280	
Length of worktop	52 ⁵ / ₈	1326
Total length	57 ⁵ / ₈	1453
Width of worktop	22 ¹³ / ₁₆	580
Total width	27 ¹⁵ / ₁₆	710
Thickness of worktop	1 ¹ / ₂	38
Thickness of skirt	4 ⁵ / ₁₆	110
Vise capacity	4 ¹ / ₂	115
Working height	35 ⁷ / ₁₆	900
Weight	117 lbs	53 kg
CUPBOARD SM03	Nr 33457	
Width	40 ¹⁵ / ₁₆	1040
Height	16 ¹ / ₈	410
Weight	55 lbs	25 kg
CUPBOARD SM07	Nr 33273	
Width	40 ¹⁵ / ₁₆	1040
Height	16 ¹ / ₈	410
Weight	46 lbs	21 kg

SCANDI PLUS 1425+SM03

Nr 35006

EAN 7316705006104



SCANDI PLUS 1425 – THE PERFECT BENCH FOR THE DISCERNING WOODWORKER!

The top, made of beech, has two double rows of bench dog holes working from each vise. You can use the holdfast in all the dog holes on the top and in the trestle. All the Sjöbergs accessories make this bench very flexible.

Package size SCANDI PLUS 1425, 1660x750x201 mm
Package size SM03, 1055x500x100 mm
Package size SM07, 1070x510x95 mm

SCANDI PLUS 1425+SM07



Nr 35007

EAN 7316705007101

SCANDI PLUS 1425



Nr 33280

EAN 7316703280148

SM03



Nr 33457

EAN 7316703457038

SM07



Nr 33273

EAN 7316703273072

JAW CUSHIONS



Nr 33381

EAN 7316703381104

ST11 HOLDFAST



Nr 33639

EAN 7316703639113

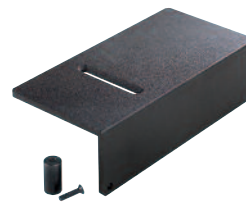
BENCH DOGS



Nr 33290 4-pack

EAN 7316703290345

ANVIL



Nr 33617

EAN 7316703617104

FILE CLAMP



Nr 33492

EAN 7316703492107



SJÖBERGS WORKBENCHES AB
SE- 576 95 Stockaryd • Sweden
Tel +46 (0)382-257 00
office@sjobergs.se • sjobergs.se

